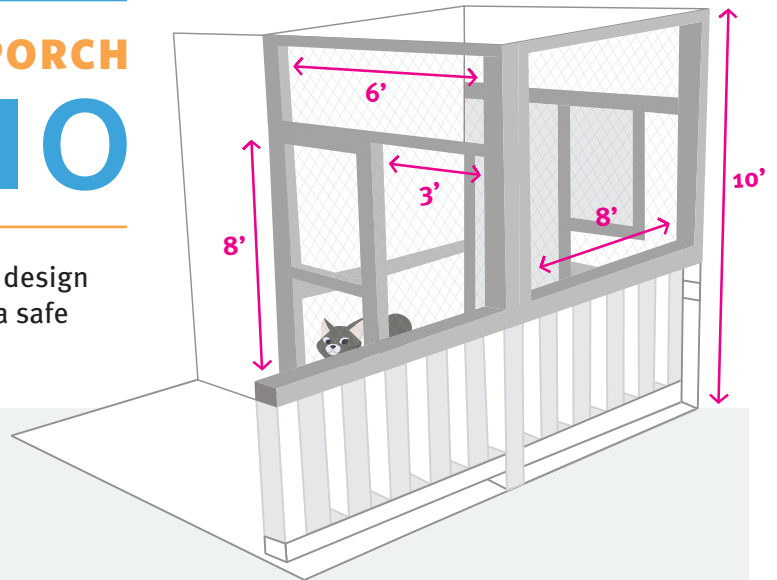


DIY ENCLOSED PORCH CATIO

Ready to create your own “Enclosed Porch Catio”? This design takes your already existing patio or deck and makes it a safe and secure place for your cats to explore outdoors!

SHOPPING LIST

- ☐ 12 **2X4** CEDAR BOARDS
- ☐ **1X1** WIRE MESH *stainless steel or galvanized to avoid weather damage*
- ☐ **3 1/2** INCH DECK SCREWS
- ☐ **3/4** INCH OR LONGER STAPLES
- ☐ DRILL BITS *slightly more narrow than screw width*
- ☐ WIRE/TIN SNIPS *to cut mesh to correct size*
- ☐ CIRCULAR SAW *and/or* TABLE SAW
- ☐ 2 GATE HINGES
- ☐ 1 DOOR LATCH
- ☐ ELECTRIC DRILL
- ☐ STAPLE GUN



When choosing wood: make it **cedar**! Cedar wood is extremely durable, and holds up well to outdoor weather conditions. Also, the wood's natural oils help to deter insect damage and rotting.

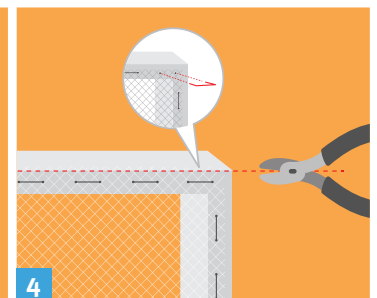
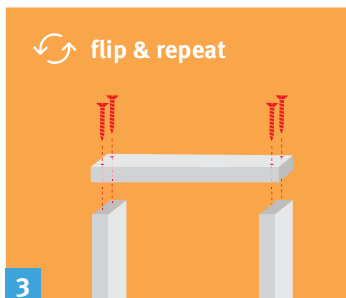
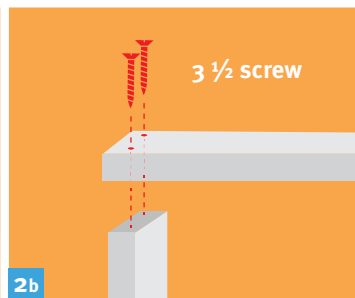
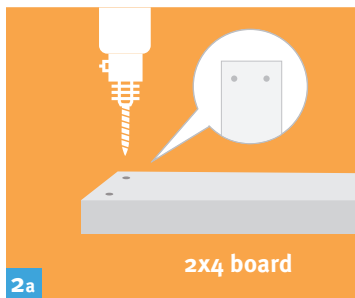


A note on **plywood**: Untreated plywood, if exposed to the elements, could break down or mold. Make sure to use a pet safe wood preservative, like paint or oil. Look for products that are water based, free from heavy metals, Low VOC, and avoid creosote. Treated plywood should not be used near ponds and streams because it is toxic to aquatic life.

All measurements provided below are included as an example! Plans can be modified for your existing space. Additionally, houses are not always straight, square, or level. Adjust the catio dimensions to fit the "personality" of your house.

STEPS TO ASSEMBLE:

1. Measure and record all your porch dimensions. Remember to measure twice and cut once.
2. Create the side wall of your catio by cutting the **2x4** boards to the correct dimensions. Drill 2 pilot holes (*a guide hole for your screw to go into*) evenly spaced on the end of each **2x4** that are slightly smaller than the screw thickness you are using. Drill the pilot holes at least 1 inch from the edge of the board to prevent the wood from splitting. Use 2, **3 1/2** inch screws to connect the lumber.
3. Build the front wall and door to your catio following the same procedures as step 1.
4. Attach the **1x1** mesh to the outside of each wall. Use staples to lock the mesh into place. Cut any extra mesh off using the wire snips to avoid injuries to yourself or your cat!



5. Assemble the frame of the patio. Join the walls together tightly by first aligning the edges flush and drilling two pilot holes, evenly spaced on the end of the **2x4**. Then use 2, **3 1/2** inch screws to lock them in place.

A note for the roof:

A note for the door:

Making a door can be tricky. It can be useful to use a carpenter square and a level to ensure that all corners are perfectly square on both the frame and the door itself. Sometimes wood is warped, which can make this step difficult. When purchasing wood, consider looking down the board on all sides to see if it seems crooked, twisted or bowed.

