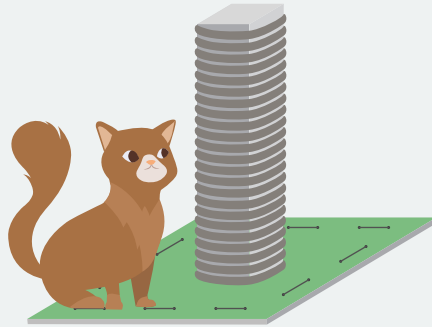


# DIY CATIO EXTRAS

Cats, just like you or I, have preferences! They benefit from opportunities to scratch, perch, and hide, whether they are inside your home or outside in a catio. Try adding some of these items to your home to create a fun space for your cat.

## SCRATCHING POST

Cats love to scratch! Create something that that they are encouraged to scratch and help them wear down their nails, keeping them healthy and free of injury. Follow the steps below to assemble your own scratching post.



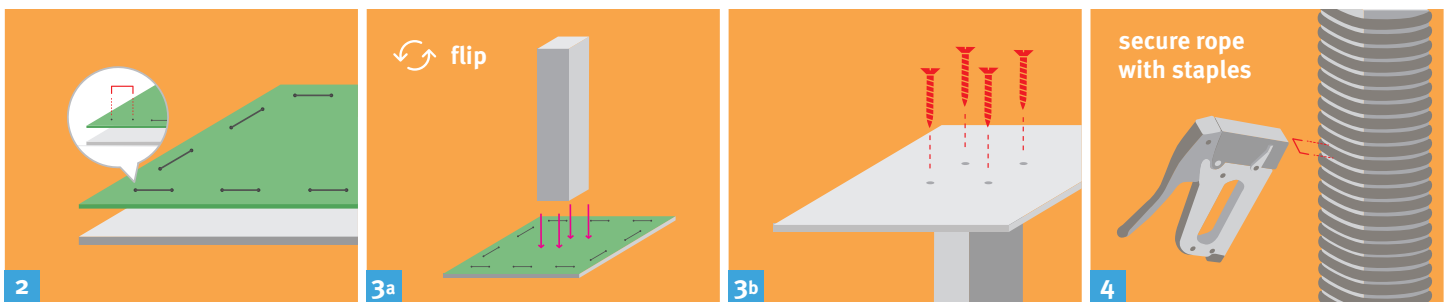
## SHOPPING LIST

- ☐ **2X4** FEET AND  $\frac{3}{4}$  INCH THICK PLYWOOD or particle board base
- ☐ **4X4** CEDAR length can vary
- ☐ **2** INCH OR LONGER SCREWS
- ☐ CARPET OR FABRIC to cover the base
- ☐ STAPLE GUN AND STAPLES
- ☐ ELECTRIC DRILL
- ☐ ROPE OR JUTE

## STEPS TO ASSEMBLE:

1. Cut plywood or particle board to your desired size to form the base of your scratching post. You can ask for assistance at the hardware store, or use a circular or table saw if you have one on hand.
2. Attach carpet to your base using the staple gun.
3. Attach the **4x4** to your base using four evenly spaced screws, one inch from each corner. It may be helpful to drill a pilot hole through the base board using a drill bit that is the same size as the screw. This will ensure a tighter connection between the base and the post.
4. Using your staple gun, wrap your rope around the **4x4** post. Ensure the staples are long enough that they cover the rope completely and secure it tightly to the post.

**Note:** Did you know that some cats have a preference for sisal rope?

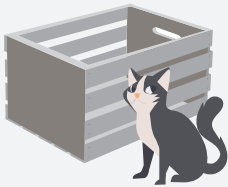


# PERCHES OF VARYING HEIGHTS

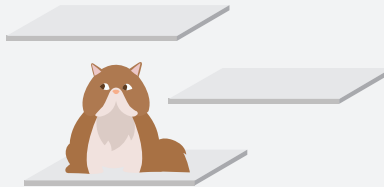
Cats enjoy their dynamic spaces and love to be high up. Adding perches provides safety and provides mental stimulation for your feline friend. Perches can be made out of so many things! Use one of the examples below or get creative.

## PERCH EXAMPLES:

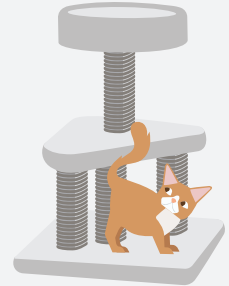
**Wooden crate:** Find an empty wall space, turn the wooden crate on its side and attach to the catio wall at varying heights that are accessible to the cat. Use  $3\frac{1}{2}$  inch deck screws to attach your crate to the stud, or wooden part of the wall. Drilling pilot holes that are slightly smaller than the screws first will help avoid the wood from splitting.



**Wooden shelves:** Attach wooden shelves to the catio wall at various heights for your cats to climb. Attachment of the wooden shelves to the wall will vary with shelf design. Make sure to drill into studs or use drywall anchors where necessary. Add soft bedding or baskets to shelves makes them even more enriching.



**Cat tree:** Add a premade cat tree (or make your own!) to your catio for your cat to climb. Using the steps above to make a scratching post, take it to the next level with the steps below.



# DIY CAT TREE

## SHOPPING LIST

- ☐ 2 INCH OR LONGER SCREWS
- ☐ 1 ROUND OR SQUARE PIECE OF PLYWOOD or particle board (approximately 1 feet square)
- ☐ CARPET OR FABRIC to cover the platform
- ☐ STAPLE GUN AND STAPLES
- ☐ ELECTRIC DRILL

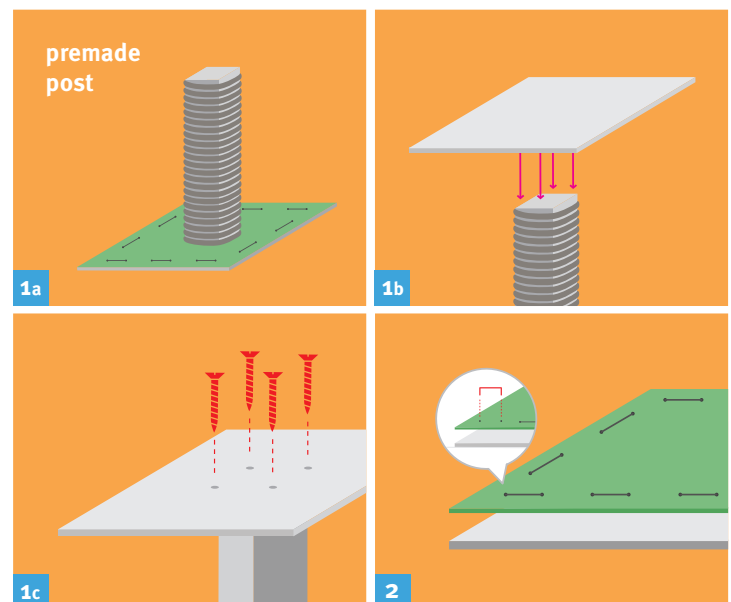
## STEPS TO ASSEMBLE:

**1.** Add a platform to your newly constructed scratching post. Take your plywood board (*your platform*) and attach it to the 4x4 post using 4, 2 inch screws placed 1 inch from the edge of the 4x4.

**2.** Attach carpet to your platform using the staple gun.

**Note:** Get creative! You can use carpet, artificial turf, or batten and sturdy fabric to provide varying surfaces for cat perches.

**Ramps or ladders:** Add in ramps or other fun things for your cat to climb. This will help your cats explore the full space of the catio. To build your own ramp, follow the steps below.



# DIY CAT RAMP

Cats enjoy their dynamic spaces and love to be high up. Adding a ramp provides safety and mental stimulation for your feline friend. Ramps can be made out of so many things! Use the example below or get creative.

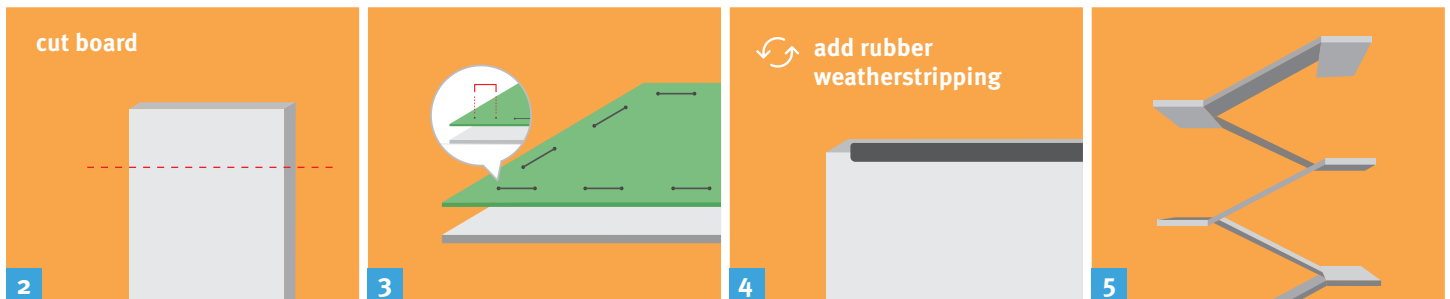
## SHOPPING LIST

- ☐ CIRCULAR SAW *and/or* TABLE SAW
- ☐ CARPET OR FABRIC (FOR THE RAMP)
- ☐ STAPLE GUN AND STAPLES
- ☐ ADHESIVE RUBBER WEATHERSTRIPPING
- ☐ CEDAR DECK BOARD

## STEPS TO ASSEMBLE:

1. Measure the distance of the ramp from its starting position on the floor to the desired platform or other area (*e.g., couch, windowsill, bed, etc.*).
2. Cut the board to the measurements you took.
3. Attach carpet to the upper side of your ramp using the staple gun.
4. Attach an adhesive rubber weatherstripping on both ends of the board.
5. Combine ramps and perches on a wall to make a fun climbing structure! This will require a little more creativity when it comes to attaching the ramp pieces to the perches.

**Note:** For more stability, use 3 ½ inch screws to keep your ladder in place.



## OTHER IDEAS?

Get creative! Add anything to help your cat make the most of their new space.