

SPCA Certified: Guidelines for Farm Maps and Barn Plans

As a member of the SPCA Certified program, we ask that you provide farm maps and barn plans to allow us to properly evaluate the environment provided to your animals. This will also allow Validators to perform quicker assessments as they can refer to your maps rather than having to take new measurements each year.

We've included some examples in this document to help you with your own farm map and barn plan preparations.

Farm Maps

Please sketch the layout of your farm including all buildings, waste management facilities, nearby waterways, manure and compost piles, farm entrances, driveways, pastures, and other areas relevant to your farm and the animal types certified in the program. Please print legibly. Aerial maps/photos are acceptable provided the relevant items are labelled in the map/photo.

See example Farm Map on page 2.

Barn Plans

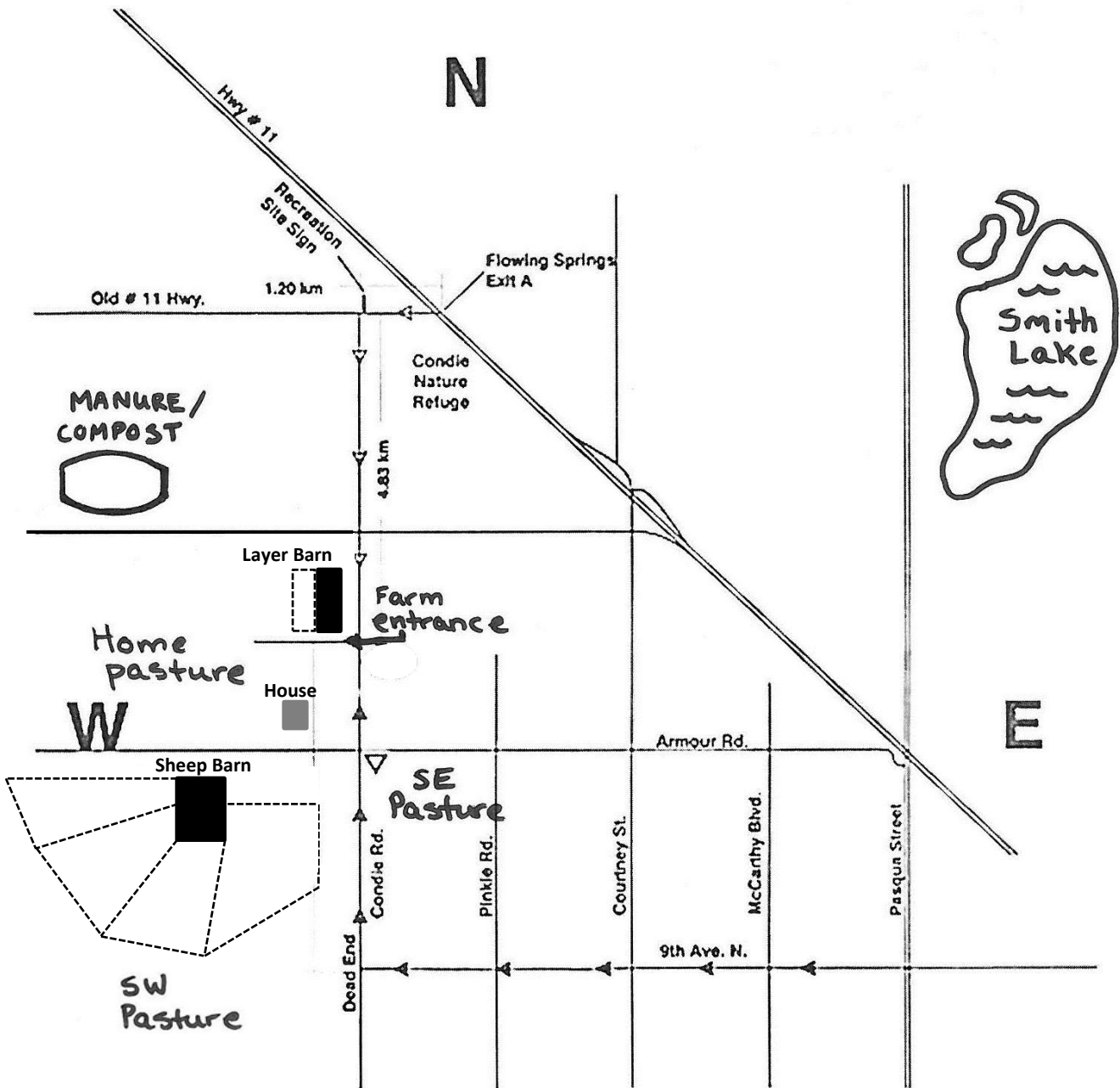
Please sketch a detailed layout of each of your barns, including dimensions (with measurement units – meters, feet, etc.), any enrichments, location of feed and water equipment, ventilation units, and other areas relevant to your farm and the animal types certified in the program (e.g. nest boxes). Please print legibly.

See example Barn Plans on pages 3-4.

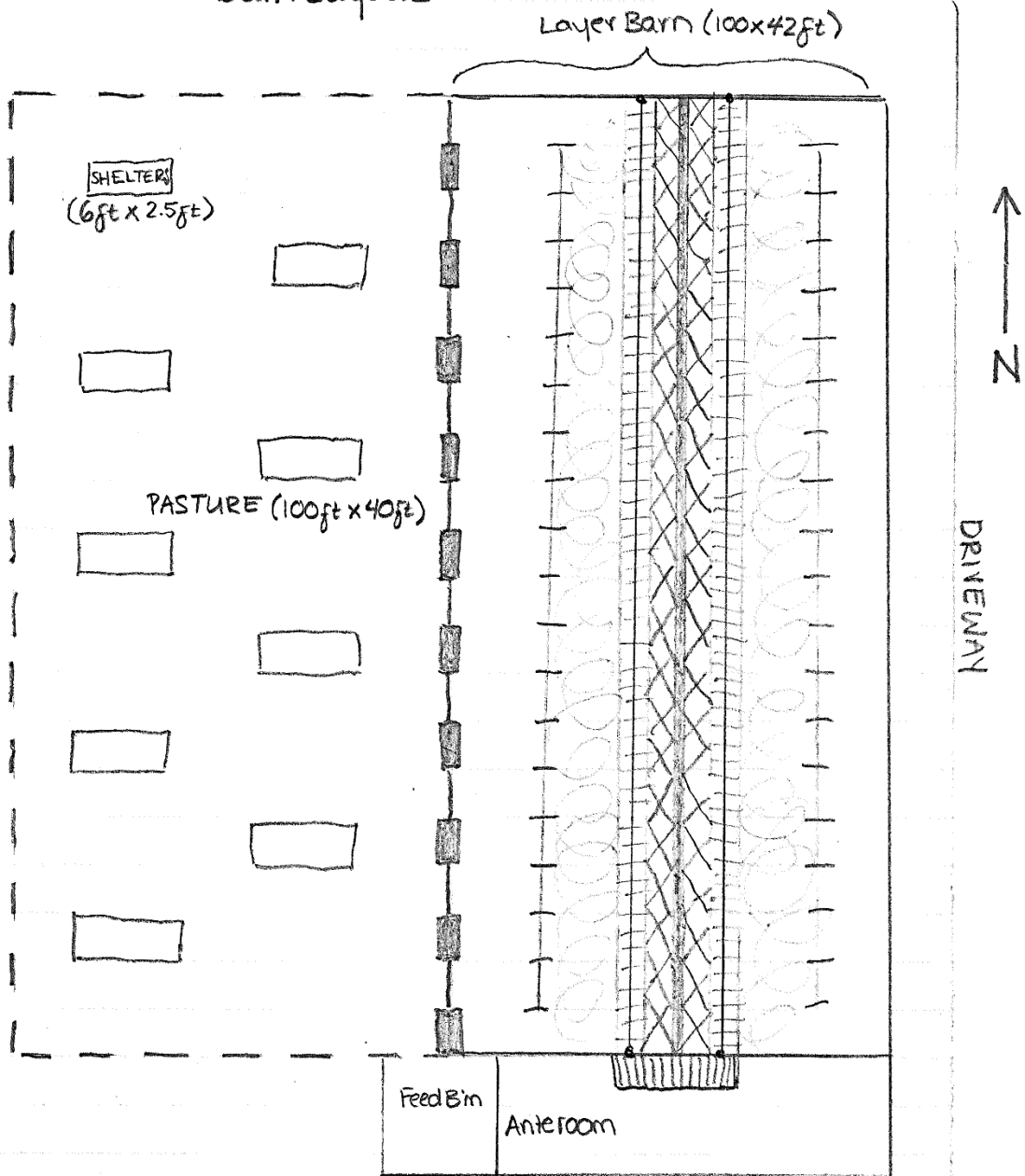
Additional note

Maps and plans will vary by type of operation and the animals raised. The following examples are meant as a general guideline only. Your maps may/may not include additional details.

HAPPY LITTLE FARM – FARM MAP (2014)



Happy Little Farm (2014) Barn Layout



Notes:

- 1) Perch space: 1 designated roosting area, 1 above roosting area, 1 above feeder. (Raised roosts) length of barn (100ft) 15cm linear space/bird.
- 2) #birds at date of inspection: 400
- 3) Litter type: wood shavings
- 4) Nest box substrate: wood shavings

- Scratch area
- Egg collection table
- Popholes (60cm x 60cm)
- shelters (6ft x 2.5ft)
- Nest boxes (110x2) 1m²/120hens
- Slatted roost area (370 x 2)
- Water line with nipples
- Feed bowls (35 x 2)

Happy Little Farm (2014)

Sheep Barn Layout

